

Neptun Express

Neptun Express is a UT 755L design, DP2, FIFI 1, platform supply vessel, The vessel is designed for world-wide, deep water operations to fulfill the following duties:

- Transportation of liquid products, deck cargo and other equipment for drilling and production support.
- Easily Upgradable to ROV operation

GENERAL

Flag:	Nigeria
Port of registry:	Lagos
Place of build:	Norway
Year:	2008. Rebuilt 2020
Class:	DNV-GL
Class Notation:	DNV +1A1, FiFi 1, SF, E0, DPS 2, Clean
IMO:	9280902
Call Sign:	5N2374

ACCOMMODATION

Accommodation:	26 Persons
Single Cabins:	10
2 Persons Cabins:	2
4 Persons Cabins:	3
Dedicated Hospital:	Yes
Mess/Day rooms, Laundry, Provision room, Stores, Galley.	

PERFORMANCES FUEL CONSUMPTION

Maximum Speed (100%):	18 m ³ /day
Service Speed (80%):	12 m ³ /day
Economy Speed (50%):	7 m ³ /day
Porstay:	~1,5m ³ /day

SAFETY

FiFi 1:	2 x 1,600 m ³ /h and monitors
Life Saving arrangement	
Davit launched MOB boat	

SPEED

Maximum speed (100%):	14,5 knots
-----------------------	------------

MAIN PARTICULARS

L.O.A	APPROX	72.00	m
L.P.P		66.80	m
BREADTH MLD		16.00	m
DEPTH MAIN DK		7.00	m
DESIGN DRAFT		5.00	m
MAX DRAFT	APPROX	5.80	m

CLASS

DnV +1A1 - SF - E0 - CLEAN - DYNPOS AUT

MACHINE & PROPULSION

Main Engines:	2 x 2,730 hp
Propellers:	2 with CCP
Bow Thrusters:	2 x 590 Kw tunnel
Stern Thrusters:	1 x 590 Kw tunnel
Rudders:	2 Independent with flap
Shaft generators:	2 x 1,800 kva
Aux generators:	2 x 250 kw
Emergency generator:	48 kw

PRINCIPLE & DIMENSION

Length Overall:	72.00 m.
Max Draught:	5.90 m
Beam:	16.00m
Net Tonnage:	645 t.
Gross Tonnage:	2,152 t
Dead Weight:	3.250 t.

DECK EQUIPMENT

Tuggers:	2 x 10t
Capstans:	2 x 8t
Deck Provision Crane:	3 t @ 16m.
Windlass:	1

DYNAMIC POSITIONING SYSTEM

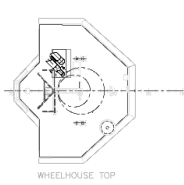
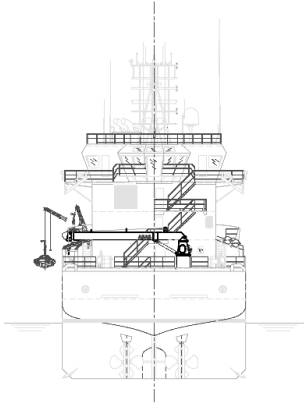
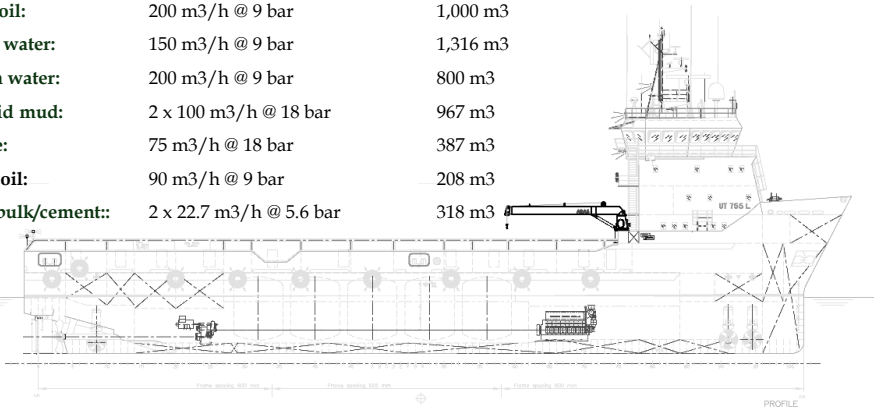
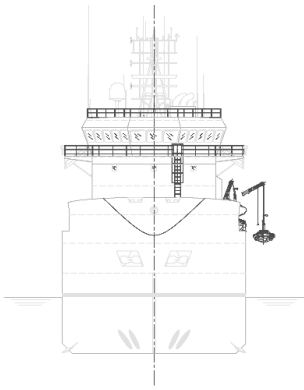
Classification:	Class 2
Position References:	2 Wind Sensors 3 VRU's 1 Cyscan MK4
Type:	DP2

ELECTRONICS

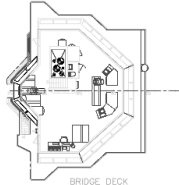
NAVIGATION	COMMUNICATION
2 radars	1 radio system compliant with GMDSS A3
3 gyrocompasses	1 Navtex
1 magnetic Compass	2 Inmarsat C
1 speed log	1 VSAT
1 autopilot system	1 Fleet Broadband
1 GPS, 2 DGPS	1 GSM
1 AIS, 1 BNWAS	1 weather fax

DELIVERY RATES & CAPACITIES

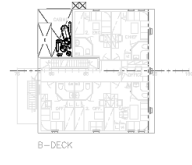
Deck area:	51.00 m. x 13.730m.	700 m2
Fuel oil:	200 m3/h @ 9 bar	1,000 m3
Drill water:	150 m3/h @ 9 bar	1,316 m3
Fresh water:	200 m3/h @ 9 bar	800 m3
Liquid mud:	2 x 100 m3/h @ 18 bar	967 m3
Brine:	75 m3/h @ 18 bar	387 m3
Base oil:	90 m3/h @ 9 bar	208 m3
Dry bulk/cement::	2 x 22.7 m3/h @ 5.6 bar	318 m3



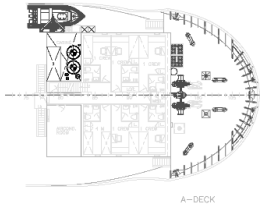
WHEELHOUSE TOP



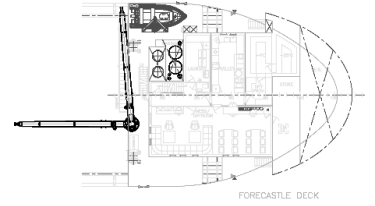
BRIDGE DECK



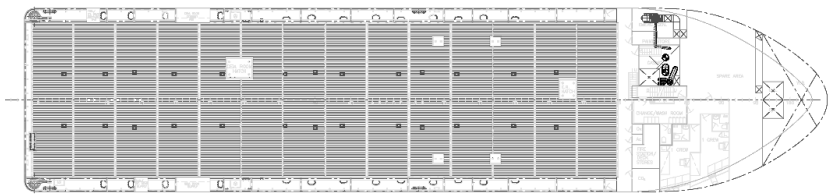
B-DECK



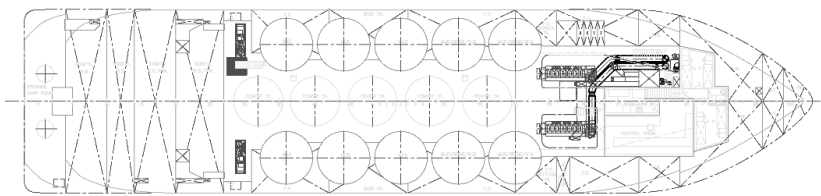
A-DECK



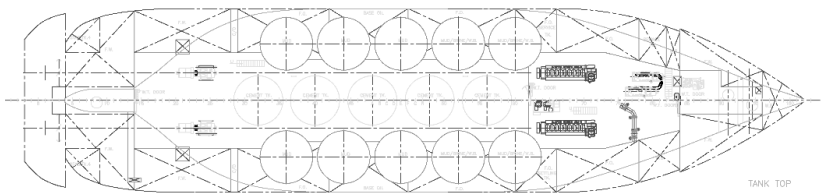
FORECASTLE DECK



MAIN DECK



TWEEN DECK



TANK TOP

Rolls-Royce UT-design		Aker Brottveag Maritime Services AS	
Lineback	84-101-001	84-101-001	84-101-001
Project No.	12001 AN	12001 AN	12001 AN
Scale	1:100	1:100	1:100
Project	99-101-001	99-101-001	99-101-001
General Arrangement			
Date	02/2003	02/2003	02/2003
Version	0	0	0

CONTACT:

Tel: +234 (0) 8077872423

Tel: +234 (0) 8033064829

E-mail: info@xpomarine.com

