

# SPEC SPP40 series

## Class

BV I, ✘ HULL, ✘ MACH, /Unrestricted navigation/Offshore Support Vessel (Supply HNLS; Fire-fighting Ship 1, Water Sprayin; Oil Recovery), /✘ AUT-UMS / ✘DYNAPOS-AM/AT R, /CLEANSHIP, NDO-3 days, Protected FO tank, /COMF-NOSIE 3, COMF-VIB 3, /ELECTRIC HYBRID (PM), /SP(34), /GREEN PASSPORT EU, SUSTAINABLESHIP-1



## MAIN PARTICULARS

	(Metric)
Designer	SDA
Builder	ROC/SOE
Lenght overall (m)	81.75
Breadth moulded (m)	17.4
Depth (m)	7.8
Design Draft (m)	4.5
Max. Draft (m)	6.3
<b>Deadweight (mt)</b>	<b>4,000</b>
Gross tonnage (mt)	3,250

## MACHINERY / PERFORMANCE

### PROPULSION - MACHINERY

Main Diesel Generators (DG)	4 x 1,235 ekW / 690 V 60 Hz@1,800rpm
Propellers	2 x 1,600 kW / Z-drive FPP AFE driven, azimuth thruster
Bow thrusters	2 x 800 kW, FPP, Tunnel Thruster Frequency Control, AFE
Emergency generator (dedicated harbor generator)	1 x 250 ekW / 450 V 60 Hz

### SPEED CONSUMPTION

Maximum speed - 13.2kts	18.3 t/day
Service speed - 12.9kts	15.8 t/day
Cruise speed - 11.2kts	10.5 t/day
Eco speed - 8.7kts	5.2 t/day
DP Station keeping (Medium Weather)	7.2 t/day
DP Station keeping (Nice Weather)	4.2 t/day
Standby in port - Harbour generator	0.91 t/day

(Speed and consumption at 4.50 m design draft, clean hull, calm sea, no sea margin, with about 400kW hotel load)

## COMBINED CAPACITIES (100%)

	(Metric)
Free cargo deck area [m <sup>2</sup> ]	800
Deck load [mt]	1,700
Fuel Oil [m <sup>3</sup> ]	1,190
Fresh water [m <sup>3</sup> ]	760
Ballast/Drill water [m <sup>3</sup> ]	1,630
Liquid Mud Tanks [m <sup>3</sup> ]	1,120
Special Product Tanks [m <sup>3</sup> ]	365
Dry Bulk/ Cement [m <sup>3</sup> ]	290
Foam ([m <sup>3</sup> ])	18

## DELIVERY RATES

Fuel oil	2 x 150 m <sup>3</sup> /h at 90 m
Fresh water	1 x 150 m <sup>3</sup> /h at 90 m
Drill water / Ballast	1 x 200 m <sup>3</sup> /h at 90 m
Dry bulk (compressor flow)	2 x 21 m <sup>3</sup> /min at 60 m
Liquid mud	2 x 100 m <sup>3</sup> /h at 180 m + 100 m <sup>3</sup> /h at 150 m
Special product	4 x 75 m <sup>3</sup> /h at 90 m

Liquid mud tanks fitted with hydraulic agitators and fixed hot water washing system

## ACCOMMODATIONS

<b>Accommodations</b>	<b>34 pers.</b>
<b>Single cabins</b>	<b>10</b>
<b>2 x men cabins</b>	<b>12</b>
<b>Mess room (1), Smoking rooms (1), Meeting Room (1), Offices (1), Laundry (1), Galley (1), Store (3), Changing Room (1), Gymnasium (1), Hospital/Sick Bay (1 Berth)</b>	
<b>Fully air-conditioned, compliant MLC 2006</b>	

## EQUIPMENT & ELECTRONICS

### DECK EQUIPMENT

	(Metric)
Windlass (mt)	2 x 9.4
Tugger winches (mt)	2 x 10
Capstan (mt)	2 x 8
Deck Provision Crane (off)	1
Crane Capacity	2.5 mt@10~16 m

### DYNAMIC POSITIONING SYSTEM

#### DP Class 2

System consists of 3 DGPS, 1 Radius or Fan Beam System

### COMMUNICATION

1 radio system compliant with GMDSS A3 rules  
Vsat, Iridium, Inmarsat C  
Auto telephone hooked with sat communication

### SAFETY EQUIPMENT

	(Metric)
<b>Fire-fighting Class 1 (FIF11) with foam and waterspray protection</b>	
Pumps [m <sup>3</sup> /h] x 2	1,600 (each)
Monitors [m <sup>3</sup> /h] x 2	1,200 (each)

### LIFE SAVING ARRANGEMENT

Vessel fitted with safety equipment according to SOLAS Regulation

1 Fast Rescue Boat with davit for 6 persons (Cum - workboat for 15 persons)

4 Life rafts (2 on each side), each life raft is able to accommodate 35 persons

Life jackets, life buoys, immersion suits

### DP CAPABILITY PLOT

Tremendous station keeping capability

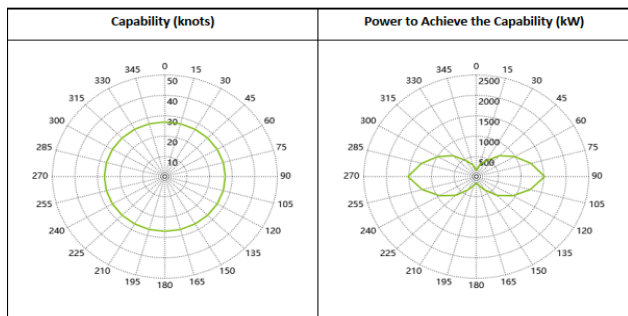
Safer operations

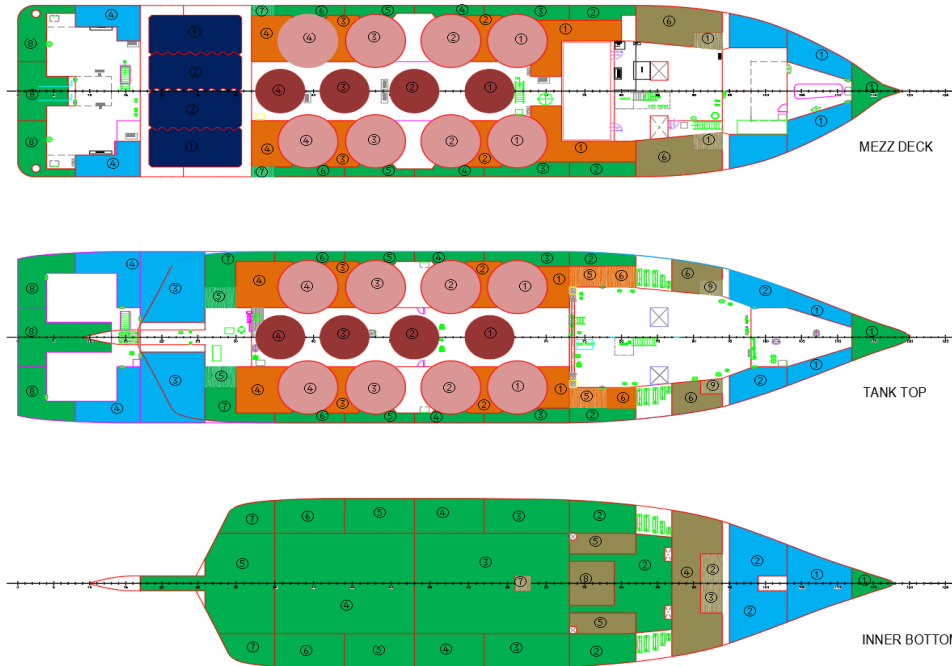
Increased operational time

Exceptional maneuverability in adverse weather conditions

AOK mode:

Wind Speed:26.8knots; Significant Wave Height: 3.1m; Current: 1.5knots





## OUTSTANDING TANKS CAPACITIES

(C) center, (P) portside, (S) starboard

BALLAST DRILL WATER TANKS			FRESH WATER TANKS			LIQUID PRODUCT TANKS		
100% CAPACITIES			100% CAPACITIES			100% CAPACITIES		
1	Ballast Drill Water Forepeak	106.0 m <sup>3</sup>	1	Fresh Water (P)	78.0 m <sup>3</sup>	1	Liquid Mud (P)	141.0 m <sup>3</sup>
2	Ballast Drill Water (C)	57.0 m <sup>3</sup>	1	Fresh Water (S)	78.0 m <sup>3</sup>	1	Liquid Mud (S)	141.0 m <sup>3</sup>
2	Ballast Drill Water (P)	78.0 m <sup>3</sup>	1	Fresh Water (C)	39.0 m <sup>3</sup>	2	Liquid Mud/FO (P)	141.0 m <sup>3</sup>
2	Ballast Drill Water (S)	78.0 m <sup>3</sup>	2	Fresh Water (P)	128.0 m <sup>3</sup>	2	Liquid Mud/FO (S)	141.0 m <sup>3</sup>
3	Ballast Drill Water (C)	171.0 m <sup>3</sup>	2	Fresh Water (S)	128.0 m <sup>3</sup>	3	Liquid Mud/FO (P)	141.0 m <sup>3</sup>
3	Ballast Drill Water (P)	94.5 m <sup>3</sup>	3	Fresh Water (P)	76.0 m <sup>3</sup>	3	Liquid Mud/FO (S)	141.0 m <sup>3</sup>
3	Ballast Drill Water (S)	94.5 m <sup>3</sup>	3	Fresh Water (S)	76.0 m <sup>3</sup>	4	Liquid Mud (P)	141.0 m <sup>3</sup>
4	Ballast Drill Water (P)	69.0 m <sup>3</sup>	3	Fresh Water (P)	80.0m <sup>3</sup>	4	Liquid Mud (S)	141.0 m <sup>3</sup>
4	Ballast Drill Water (S)	69.0 m <sup>3</sup>	4	Fresh Water (S)	80.0m <sup>3</sup>			
4	Ballast Drill Water (C)	153.0 m <sup>3</sup>						
5	Ballast Drill Water (P)	42.0 m <sup>3</sup>						
5	Ballast Drill Water (S)	42.0 m <sup>3</sup>						
5	Ballast Drill Water (C)	72.0 m <sup>3</sup>						
6	Ballast Drill Water (P)	70.0 m <sup>3</sup>						
6	Ballast Drill Water (S)	70.0 m <sup>3</sup>						
7	Ballast Drill Water (P)	67.0 m <sup>3</sup>						
7	Ballast Drill Water (S)	67.0 m <sup>3</sup>						
8	Ballast Drill Water Aftpeak (P)	61.0 m <sup>3</sup>						
8	Ballast Drill Water Aftpeak (S)	61.0 m <sup>3</sup>						
8	Ballast Drill Water Aftpeak (C)	112.0 m <sup>3</sup>						
<b>TOTAL = 1,630 m<sup>3</sup></b>			<b>TOTAL = 760 m<sup>3</sup></b>					

FUEL OIL TANKS			DRY BULK TANKS		
100% CAPACITIES			100% CAPACITIES		
1	Fuel Oil (P)	100.0m <sup>3</sup>	1	Dry Bulk (C)	73.0 m <sup>3</sup>
1	Fuel Oil (S)	105.0 m <sup>3</sup>	2	Dry Bulk (C)	73.0 m <sup>3</sup>
2	Fuel Oil (P)	35.0 m <sup>3</sup>	3	Dry Bulk (C)	73.0 m <sup>3</sup>
2	Fuel Oil (S)	35.0 m <sup>3</sup>	4	Dry Bulk (C)	73.0 m <sup>3</sup>
3	Fuel Oil (P)	40.0 m <sup>3</sup>	<b>TOTAL = 290 m<sup>3</sup></b>		
3	Fuel Oil (S)	40.0 m <sup>3</sup>			
4	Fuel Oil (P)	105.0 m <sup>3</sup>			
4	Fuel Oil (S)	105.0 m <sup>3</sup>			
5	Fuel Oil Settling (P)	20.0 m <sup>3</sup>			
5	Fuel Oil Settling (S)	20.0 m <sup>3</sup>			
6	Fuel Oil Service (P)	15.0 m <sup>3</sup>			
6	Fuel Oil Service (S)	15.0 m <sup>3</sup>			
2	Liquid Mud/FO (P)	141.0 m <sup>3</sup>	<b>SPECIAL CARGO TANKS</b>		
2	Liquid Mud/FO (S)	141.0 m <sup>3</sup>	100% CAPACITIES		
3	Liquid Mud/FO (P)	141.0 m <sup>3</sup>	1	Special Product (P)	88.0 m <sup>3</sup>
3	Liquid Mud/FO (S)	141.0 m <sup>3</sup>	1	Special Product (S)	93.0 m <sup>3</sup>
			2	Special Product (P)	92.0 m <sup>3</sup>
			2	Special Product (S)	92.0 m <sup>3</sup>
<b>TOTAL = 1,190 m<sup>3</sup></b>			<b>TOTAL = 365 m<sup>3</sup></b>		



**Sinopacific Engineering & Contracting Co.,Ltd**

**Web: www.spec.com.sg**

**E-mail: biz@sinopacific.com.cn**

Total amount of cargo vessel is able to carry is equivalent to the deadweight of vessel